



# MONTHLY MEMBERSHIP PROGRESS REPORT

Results as of: 10/31/2014

Multiple District 27

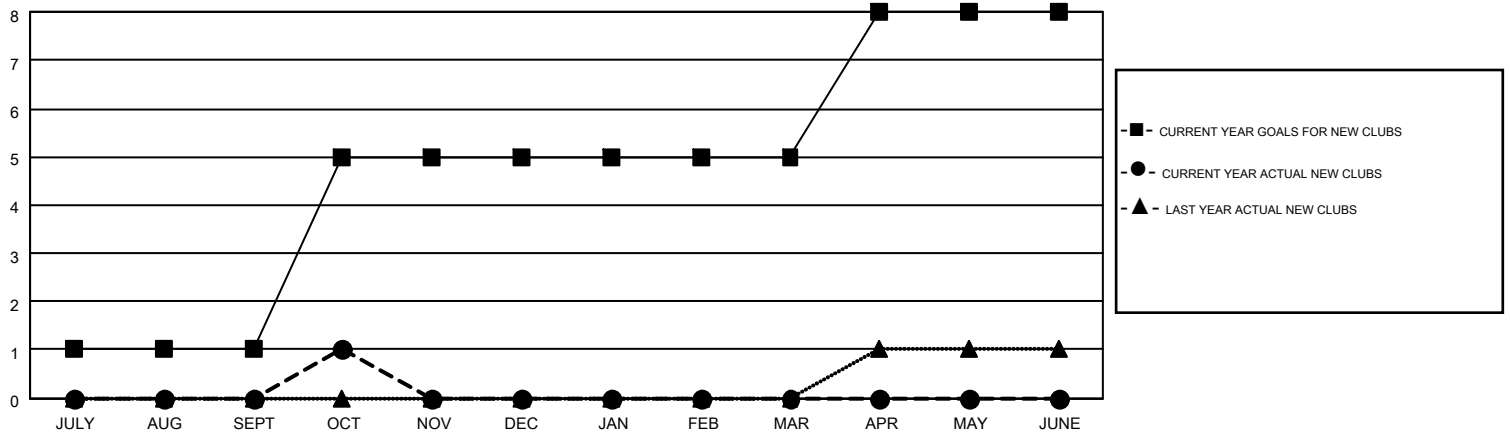
LOCATION: WISCONSIN

GMT: JUDY HANKOM

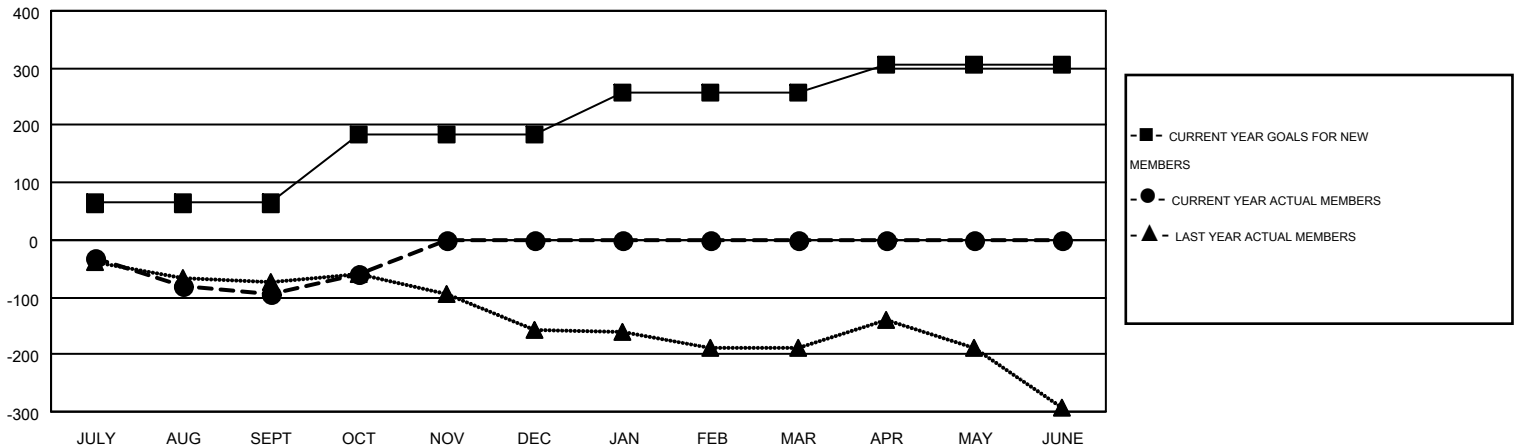
GMT CA 1

Clubs					Members				
RESULTS FOR 2014-2015					RESULTS FOR 2014-2015				
QUARTER	NEW CLUB GOAL	NEW CLUBS	DROPPED CLUBS	NET GAIN/LOSS	QUARTER	NEW MEMBER GOAL	CHARTER AND NEW MEMBERS ADDED	DROPPED MEMBERS	NET GAIN/LOSS
JULY/AUG/SEPT	1	0	4	-4	JULY/AUG/SEPT	64	349	443	-94
OCT/NOV/DEC	4	1	0	1	OCT/NOV/DEC	119	179	146	33
JAN/FEB/MAR	0	0	0	0	JAN/FEB/MAR	75	0	0	0
APR/MAY/JUNE	3	0	0	0	APR/MAY/JUNE	47	0	0	0

GOALS AND ACTUAL NEW CLUBS CUMULATIVE



GOALS AND ACTUAL MEMBERS CUMULATIVE



DROPPED CLUBS: 4	211 CLUBS OF 543 ADDED 1 OR MORE NEW MEMBERS	<u>GENDER DISTRIBUTION</u>	
<u>DROPPED MEMBERS</u>		MALE	14,844 (80.72%)
DECEASED	63	FEMALE	3,546 (19.28%)
CLUB CANCELLED	17	<u>FAMILY UNIT MEMBERS</u> 3,102	
OTHER	509	<u>HEAD OF HOUSEHOLD</u> 1,522	
TOTAL	589	<u>NON-HEAD OF HOUSEHOLD</u> 1,580	

[CLICK HERE FOR HEALTH ASSESSMENT DATA](#)